

**KIRJES®**



**OrbiCut**

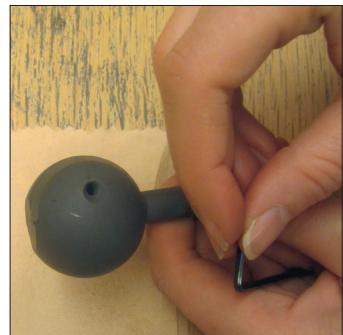




*History about Plano System AB*

The history of Plano System AB and the inventor Svante Larsson starts in the small village Sörfors nearby the town of Umeå in northern Sweden.

- 1986 The first product under the name **PLANO** was the glue-press that was invented in 1986. It was an immediate success and it is still one of our most popular products. The company was a one product company until 1994.
- 1994 The awarded sanding drum **PLANOREX** entered the market.
- 1998 The **SAUNO** drying aggregates were integrated and they are now helping thousands of woodworkers to produce dry and stable wood of superior quality.
- 2001 The well known **NOBEX** mitre saws and squares were integrated in 2001 and the **NOBEX** Octo and **NOBEX** Quattro Carbon have since then been successfully introduced.
- 2007 The **KIRJES** sanding and polishing program, based on the unique Kirjes inflatable sanding drums, became a PLANO-member. The Kirjes program has grown a lot since and the sales are reaching higher and higher levels every year.
- 2013 The latest developed and patented PLANO WOODWORKING product is the smart hollowing tool **ORBICUT**. It is met with great enthusiasm wherever shown and everyone is amazed by how safe and easy it is to handle and by the wide range of opportunities it offers. It is made in Sweden in our own facilities.
- 2017 Product Rights for Nobex, Plano, PlanoRex and Sauno have been sold to Logosol AB and the production has moved to Härnösand. We keep the product groups of **KIRJES** and **ORBICUT**.



*We are proud that our products are not just successfully introduced but used and admired after many years in the hands of creative woodworkers.*



## KIRJES Sanding and Polishing System

Kirjes have a history in sanding of wood. The first sanding drum from Kirjes was invented for sanding backs of chairs. From that a wider selection came forth. Today there are about fifty different product combinations to meet the demands from the market.

**Inflatable sanding drums** comes in five sizes. Soft and flexible which follows the material for excellent results when sanding.

**Sanding sleeves** with extra long life. Grit numbers from 60 to 400.

**Brush sleeves** brushes the wax/oil unto the material before polishing with **Cloth Sleeves**.

**Robust electric motor** for 230 V, one phase, with 2 tapered key-chucks.

**Flexible shaft** with a key chuck 1,5–10 mm. Drive shaft 6 mm. Key-less chuck 1,5-8 mm also included.

### Other products:

- **Dust Extractor** for dust removal when sanding.
- **Kirjes Organic Oil-Wax** is a unique non-toxic oil based wax.



## KIRJES Sanding & Polishing System



## KIRJES Inflatable Sanders

Kirjes inflatable sanders comes in a range of sizes from the smallest model 120 up to 140 Bowl-sander – a unique product (KJ140R).

Kirjes has managed to solve and patented the lock and quick-change of sanding sleeves on a round pear-shaped formed pneumatic sander, ideal to use inside bowls and on any concave surface. Many will be positively surprised to discover how effective the Kirjes bowl-sander really is. With sanding sleeves ranging from grit 60 to 400 you are able to form, sand and finish.



### Inflatable Sanders & Hand Pump



Art no. KJ120



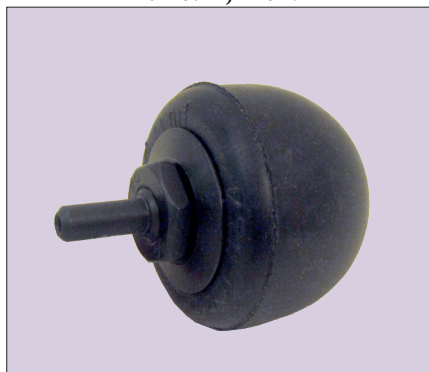
Art no. KJ120R



Art no. KJ130



Art no. KJ140



Art no. KJ140R



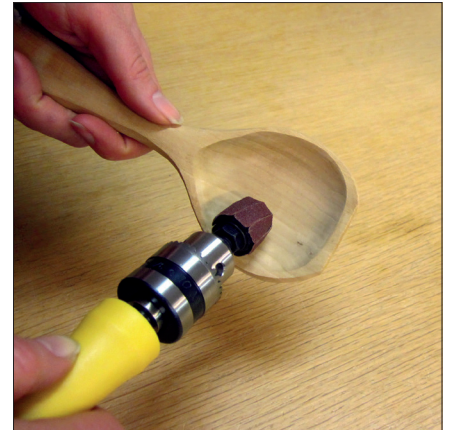
Art no. KJ911 Hand Pump

Article Number	Drum diameter mm	Drum height mm	Shank diameter mm	Replacement rubber bulbs
KJ120	20	32	6	KJ127
KJ120R	20	19	6	KJ159
KJ130	28	80	8	KJ138
KJ140	42	44	6	KJ108
KJ140R	42	40	6	KJ169



## KIRJES Sanding Sleeves

KIRJES Sanding Sleeves ranging from grit number 60 to 400 enables you to form, sand and finish as you wish. The sleeves are made of a soft and strong quality and lasts at least ten times longer than an ordinary sandpaper. The softness of the sanding process is determined of how much the pneumatic sanders are inflated.



## Sanding Sleeves & Abrasive Belt Cleaner



Sanding sleeve to KJ120



Sanding sleeve to KJ120R



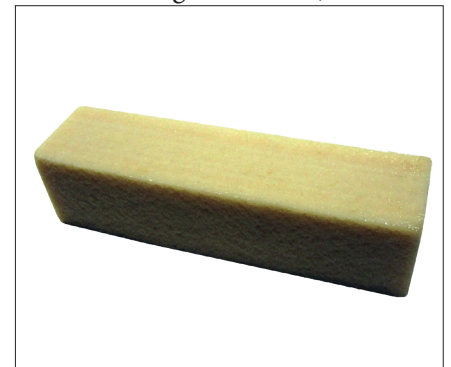
Sanding sleeve to KJ130



Sanding sleeve to KJ140



Sanding sleeve to KJ140R



Abrasive belt cleaner KJ921

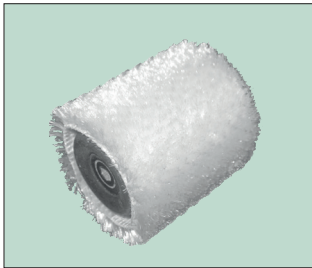
<i>Fits to</i>	<i>Grit no. 60</i>	<i>Grit no. 80</i>	<i>Grit no. 120</i>	<i>Grit no. 150</i>	<i>Grit no. 220</i>	<i>Grit no. 320</i>	<i>Grit no. 400</i>
KJ120		KJ121	KJ122	KJ123	KJ124	KJ125	KJ126
KJ120R		KJ153		KJ155		KJ157	
KJ130	KJ131	KJ132	KJ133	KJ134	KJ139	KJ136	KJ137
KJ140	KJ102	KJ103	KJ104	KJ105	KJ117	KJ106	KJ107
KJ140R	KJ162	KJ163	KJ164	KJ165	KJ166	KJ167	

## KIRJES Brush- & Cloth Sleeves / Oil-Wax

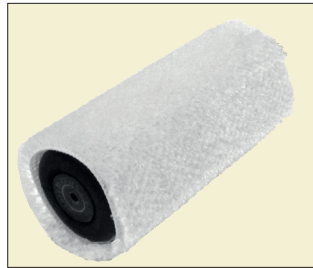
Kirjes Brush Sleeves are part of the Kirjes Sanding and Polishing System. They spread the oil and wax evenly over the seemingly smooth but fibrous and porous wood surface and buff a first and second layer of dried Kirjes Oil-Wax. Kirjes Brush Sleeves make polishing fun and eliminate hours of laborious hand polishing! In combination with a finishing cloth sleeves and Kirjes Organic Non-toxic Oil-Wax you will get a very fine result.



### Brush Sleeves, Cloth Sleeves & Oil-Wax



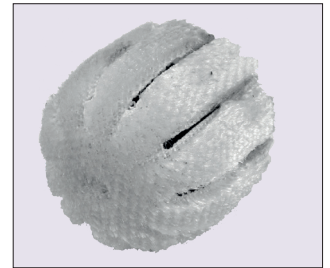
Brush sleeve to KJ120



Brush sleeve to KJ130



Brush sleeve to KJ140



Brush sleeve to KJ140R



Cloth sleeve to KJ120



Cloth sleeve to KJ130



Cloth sleeve to KJ140



Cloth sleeve to KJ140R



Oil-Wax 50ml KJ907



Oil-Wax 300ml KJ909

<i>Fits to</i>	<i>Brush Sleeves</i>	<i>Cloth Sleeves</i>
KJ120	KJ820	KJ821
KJ130	KJ830	KJ831
KJ140	KJ840	KJ841
KJ140R	KJ840R	KJ841R



## KIRJES Accessories

Kirjes is the most complete sanding system which adapts to the shape of your work, whether concave, convex or flat. Today Kirjes is renowned all over the world for being able to create that velvety finished touch on any beautiful wooden object, effectively and pleasantly with no dust and no noise.

Kirjes Sanding and Polishing Motor is extremely quiet.

Flexible shaft with max speed of 10 000 rpm.

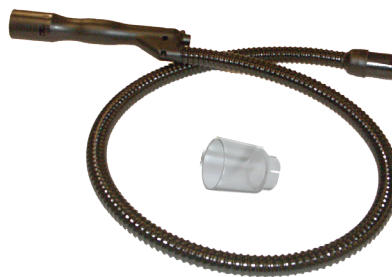
Dust Extractor and Extendor enable dust free woodworking.



## Accessories



Kirjes Motor. Art. no. KJ913K-230



Dust Extractor. Art no. KJ211



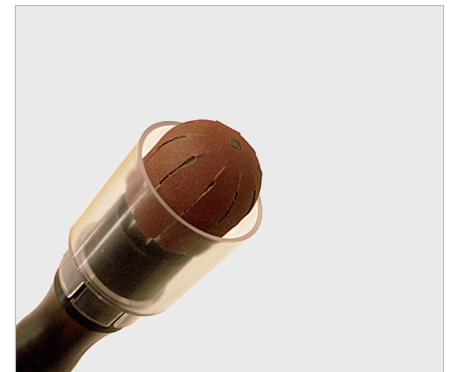
Dust Extendor. Art. no. KJ219



Flexible Shaft. Art no. KJ202S



Small chuck 1.5-8mm. Art no. KJ203



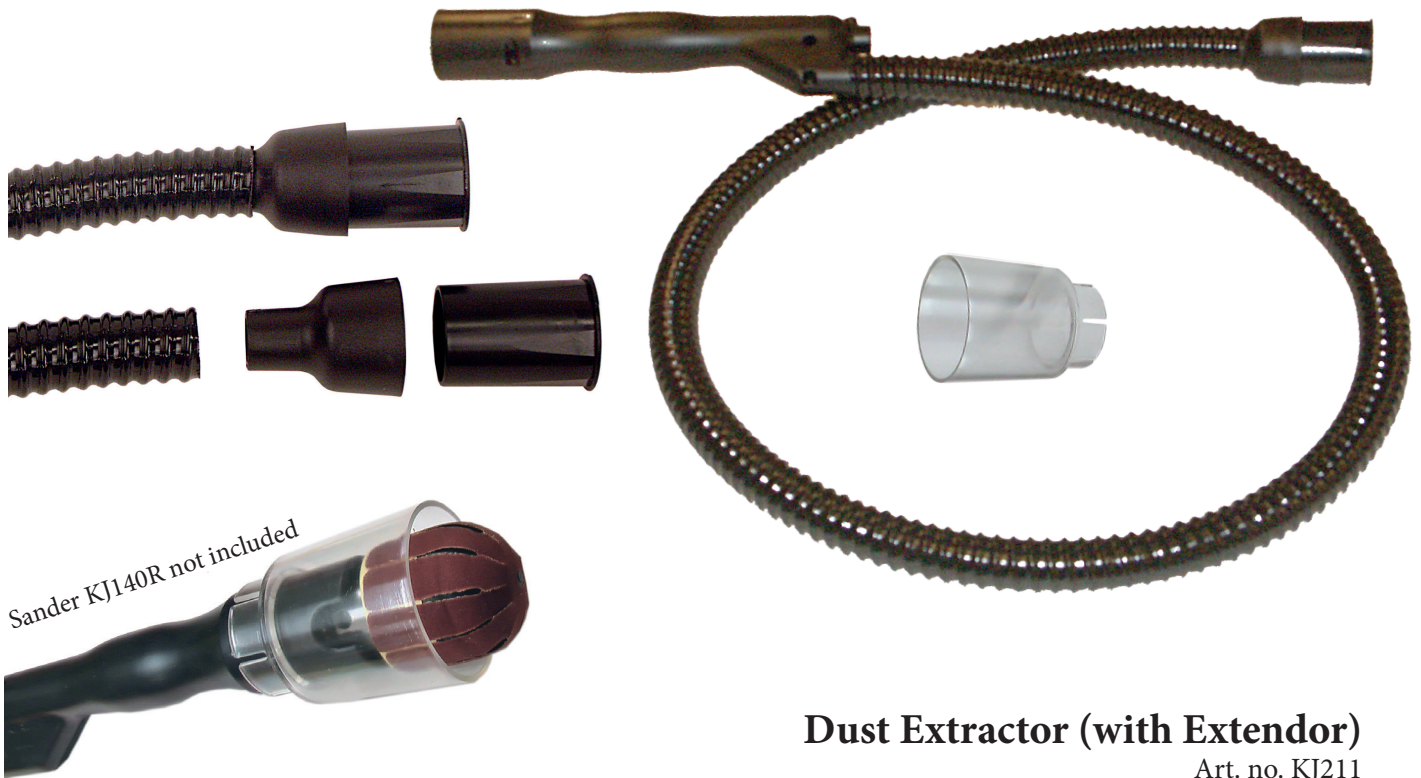
Dust Extendor with KJ140R

### Technical info

Kirjes Sanding & Polishing Motor  
Weight: 4,5 kg  
Total length: 300 mm  
Height: 150 mm  
300 W 3000 rpm  
Art. no. KJ913K

Kirjes Flexible Shaft  
Weight: 885 gram  
Length: 1450 mm  
Drive Shank: 6 mm  
Key chuck: 1,5-10 mm  
Small chuck: 1,5-8 mm  
Art. no. KJ202S

Kirjes Dust Extractor  
(Fits only Kirjes)  
Dust Extendor included  
Weight: 265 gram  
Total length: 1600 mm  
Art. no. KJ211









**Basic Sanding Kit**

Art. no. KJ140R140



**Total Sanding Kit**

Art. no. KJ101





**Detailed Sanding & Polishing Kit**

Art. no. KJ120130P



**Polishing Kit**

Art. no. KJ908



**Kirjes polishing motor KJ913K-230  
with Inflatable Sander KJ140  
and Brush KJ840**

## ORBICUT - a flexible rotating cutting tool

Compared to similar shaped high speed tools **OrbiCut** is a low speed cutting tool that hollows and cuts wood and other porous materials in an exceptional safe way provided it is used with the recommended speed of 2500 – 3500 rpm. Max speed is 5000 rpm.

**OrbiCut** is a rotating cutting tool. Unlike router tools that creates dust from the harvested material, the **OrbiCut** creates chips like a plane. By means of the curved blades in HSS-steel the wooden material is processed during rotation of the tool. For the best results, work along the grain of the wood and angle the **OrbiCut** to and fro using gentle movements.

**OrbiCut** comes in sizes 40 mm and 20 mm diameter. Spare cutting blades comes in two varieties. **Fine** (soft), which is standard, and **Coarse** (aggressive).



The larger model **OrbiCut 40** on a hand drill.

### OrbiCut



**OrbiCut 20** can be mounted in a flexible shaft which is driven by a electric motor and gives fine opportunities to work more freely due to the flexible shaft. Here you can see **OrbiCut 40** and the smaller model **OrbiCut 20** with Kirjes Flexible Shaft and the new key-less chuck.

#### Technical info

**OrbiCut 20**  
Weight: 70 gram  
Length: 45 mm  
Diameter: 20 mm  
Art. no. 60020

**OrbiCut 40**  
Weight: 315 gram  
Length: 75 mm  
Diameter: 40 mm  
Art. no. 60040

Spare Cutters fits to	FINE Article number	COARSE Article number
OC 20	60202	
OC 20		60212
OC 40	60402	
OC 40		60412
Grinding Card		60100